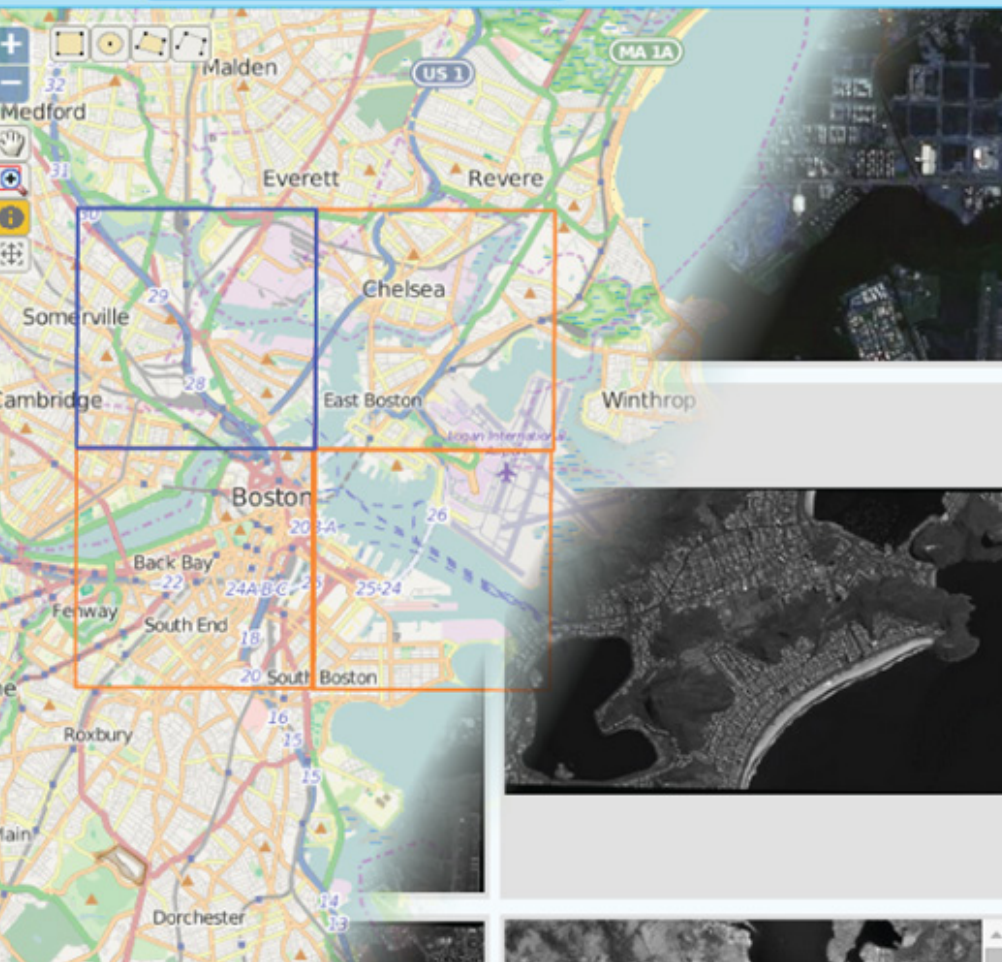


Current Query: 

# ADVANCED GEOSPATIAL DATA MANAGEMENT GEOCATALOG™ ENTERPRISE

Analysts today need on-demand access to vast geospatial data to generate mission-critical intelligence products. GeoCatalog is the premier data management framework driving that process. Analysts can efficiently access and organize imagery for exploitation and dissemination in geospatial analysis software. The intuitive and easy-to-use web interface enables users to access, manage and analyze large holdings of geospatial data, ensuring every phase of mission success.

**TEXTRON** Systems

Geospatial Solutions

21660 Ridgetop Circle Suite 110, Sterling, VA 20166 | 800.937.6881 | [geosales@textronsystems.com](mailto:geosales@textronsystems.com)

# ON-DEMAND ACCESS TO GEOSPATIAL DATA

## DATA MANAGEMENT

Deal with rapidly expanding volumes of data with GeoCatalog's enterprise data processing services and analytical engines.



### ACCESSIBILITY

Web-based and cloud deployable with Amazon Web-Services



### INTEGRATION

Integrates with "Infrastructure as a Service" and enterprise authentication services



### DATA MANAGEMENT

Ingest, access, manage and archive all geospatial holdings



### USERS

Scalable to user base, flexible to grant and limit access

## DISCOVERY

GeoCatalog provides an easy and intuitive web interface to quickly access your library of geospatial holdings.



### METADATA

Search for and extract metadata for various geospatial data types including imagery, video, LIDAR, elevation and foundational data types



### INFORMATION MANAGEMENT

Index and ingest all geospatial holdings



### ACCESS

Rapidly access and manage geospatial data



### QUERY

Customized query templates to find timely, relevant geospatial information

## ANALYTICAL WORKFLOW

GeoCatalog promotes efficient analysis and dissemination in RemoteView.



### DATABASE MANAGEMENT

Provides configurable schemas, queries, templates and results



### INFORMATION WORKFLOWS

Move, modify and transform geospatial information



### ANALYSIS TOOLS

Connects with analysis tools to deliver geospatial understanding



### IMAGERY FORMATS

Convert imagery to different formats (e.g. TFRD to NITF)



### STORAGE

Processes and stores geospatial knowledge

**TEXTRON** Systems

[www.textron.com/geospatial](http://www.textron.com/geospatial)

Textron Systems Geospatial Solutions is a business of Textron Systems. ©2016 Overwatch Systems, Ltd