

RVcloud™

GEOSPATIAL ANALYTIC SOFTWARE

The RVcloud web-based Electronic Light Table (ELT) is the latest generation in our trusted line of geospatial analytic software. Designed with our substantial industry experience and developed using an agile model, RVcloud accelerates delivery of our proven image exploitation capabilities through the cloud.



RVCLOUD™

REMOTEVIEW™ THROUGH THICK AND THIN

SPECIFICATIONS



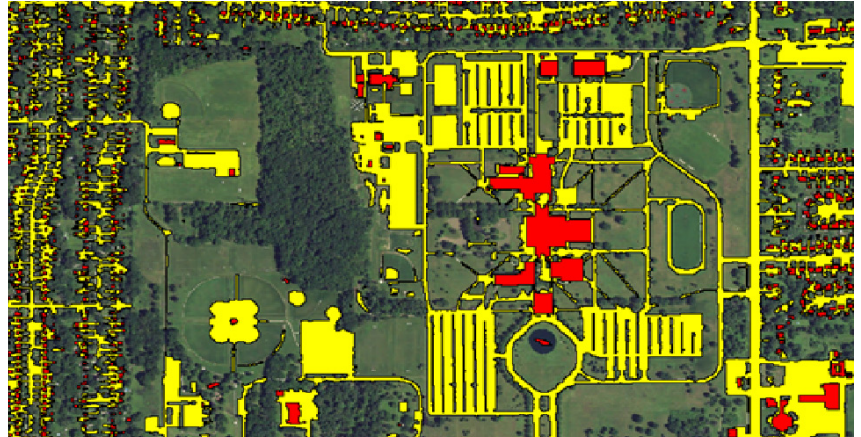
EXPECT
Fast Response



UTILIZE
Mobile and Desktop



RELY ON
Accuracy



BENEFITS



Consolidated computing resources are cost-effective and highly scalable



Fully integrates with enterprise services and operates with other software systems



Ease of use and simplified deployment dramatically broaden access to new GEOINT users



Reduced application support effort due to centralized administration



Accelerates integration of new features and custom modules

FEATURES

- > Core imagery exploitation capabilities from RemoteView
- > On-demand streaming of data for better performance in low- bandwidth environments
- > Instant delivery of high-fidelity imagery from all standard GEOINT formats
- > Automatic image enhancement for optimal viewing; full user adjustments available
- > No pixel distortion due to map projections
- > Full set of navigation techniques, including smooth and continuous roam and geo-jump
- > Precision georeferencing and canonical mensuration services
- > Multi-image comparison, including blend, mosaic and 2CMV
- > Full graphic overlays
- > API enables enterprise integration

CONTACT US

+1.800.655.2616
Hunt Valley, MD

es.textron.com



**SCAN FOR
PRODUCT DETAILS**

