

TEST, TRAINING & SIMULATION

A²DRI™

DATA RECORDER/INJECTOR

HIGH-SPEED DEVICE TO EXPAND THE DIGITAL CHAIN PRIOR TO RF GENERATION

Textron Systems' A²DRI™ is a modular digital expansion unit which complements the A2PATS® System Product Line by enhancing core simulation capability through the integration of additional processing hardware. The A2DRI is in its 3rd generation and utilizes the latest cutting-edge commercial technology to provide Data Recording and Analysis, NEWEG PDW Injection, Receive Antenna Beam Steering, External RF, Polarization Switching, RF Scoring, and Increased Pulse Density.



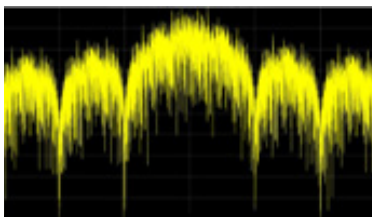
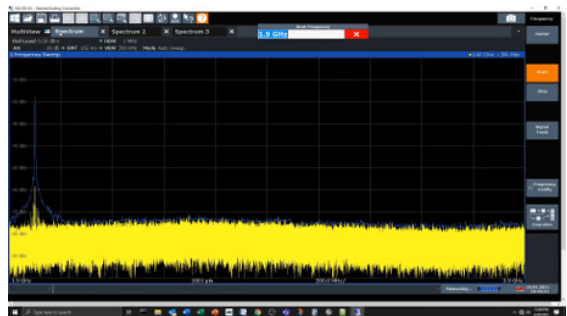
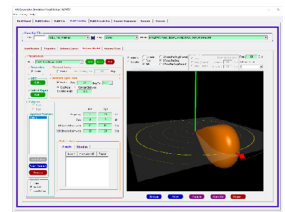
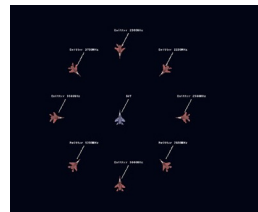
3RD GENERATION DESIGN

USES CUTTING-EDGE TECHNOLOGY

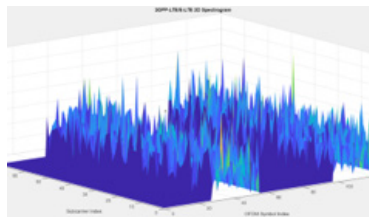
The A2DRI can be configured to offer higher throughput of data, future expansion for your simulator. The high-speed, 19in rack mountable A2DRI is commercially available and can be configured to support several test requirements that seamlessly complements the A2PATS family of products.

KEY FEATURES & BENEFITS

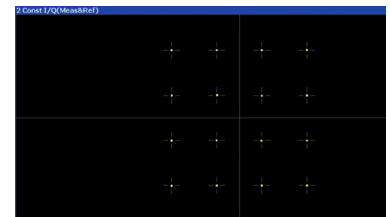
- > Store pulse data to an onboard RAID array and analyze data within the SimUI GUI or export data to a CSV file.
- > Apply receiver effects to an incoming stream of NEWEG PDWs to generate modulated RF output.
- > Simulate active electronically scanned arrays and mechanical receiver antenna scans.
- > Geolocate and modulate user-injected analog RF signals into the simulation in near real-time.
- > Quickly alternate between multiple antenna polarization vectors in a port.
- > Compare actual RF output to exact digital pulse data.
- > View simulation details, statistics and debug options in GUI.
- > Scale up scenario density enabling more signals, modes, platforms and receivers.
- > Compatible with COMINT and ELINT Signals.



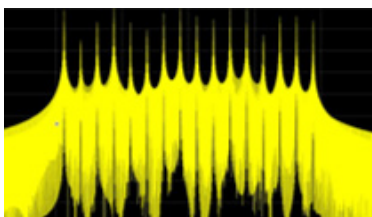
PULSE DATA RECORDING AND ANALYSIS



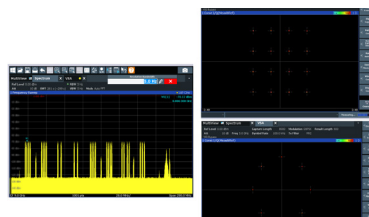
INCREASED PULSE DENSITY



DYNAMICALLY ENHANCED STREAMING I&Q



PDW INJECTOR AND CONVERTER



RECEIVE ANTENNA BEAM STEERING



EXTERNAL RF

Commercially available A2DRI part numbers:

40520-41000-21, 40520-41000-40, 40520-43000-10, 40520-43000-201, 40520-43000-202, 40520-43000-203, 40520-43000-204, 40520-43000-205, 40520-43000-206, 40520-43000-207, 40520-43000-208

CONTACT US

+1.800.655.2616
Hunt Valley, MD

es.textronsystems.com



SCAN FOR
PRODUCT DETAILS

