

SeeGEO[®] EMBEDDED

MISSION-CENTRIC FULL MOTION VIDEO EXPLOITATION



IMAGERY & DATA ANALYSIS

STREAM, ARCHIVE, COLLABORATE, EXPLOIT

SeeGEO[®] Embedded is a secure, web-based solution designed for the tactical edge. SeeGEO[®] Embedded provides Full Motion Video (FMV) analysts with the ability to visualize MISB-compliant data and create mission products that can be easily exploited live and referenced later for analysis.

- > Configure Livestreaming Data
- > Catalog and Re-Stream FMV Data
- > Ground Station and Mission Chat Capabilities
- > Detailed Exploitation of Captured Stills
- > Quick, Seamless Report Generation
- > Collaborative Mission-Oriented Archiving

[TextronSystems.com](https://www.textron.com)

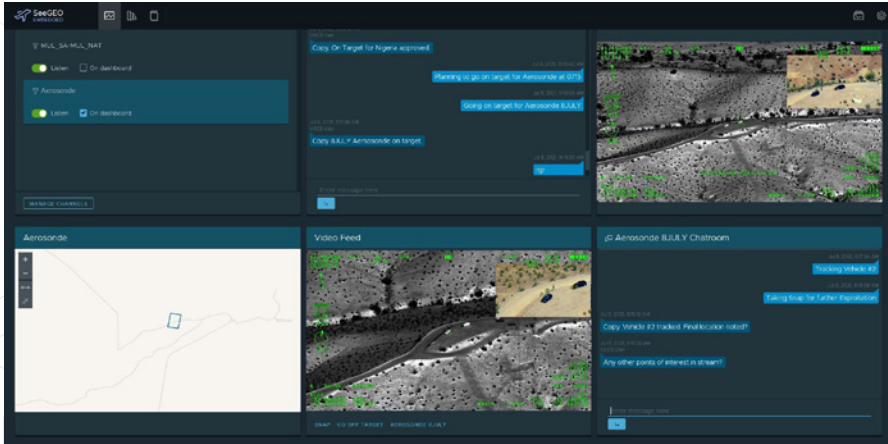


TEXTRON Systems

PUSHING PAST POSSIBLE

MISSION FOCUSED

- > Connect to multiple livestreams via IP addresses and ports
- > Re-stream and transcode active feeds to other products such as Textron Systems' FMV tool, Optice™
- > Archive mission-specific chat, video and imagery products together to streamline workflows and collaboration
- > Support complex mission priorities through a simplified, user-friendly dashboard
- > Perform a unified search across all content types and sources with integrated tools



FULL MOTION VIDEO EXPLOITATION

- > Display FMV footprint on a user-specified map
- > Generate geo-referenced stills from livestreaming and archived video
- > Enhance, measure and annotate images that align with Textron Systems' RemoteView™
- > Create reports quickly with configurable templates and publication tools

