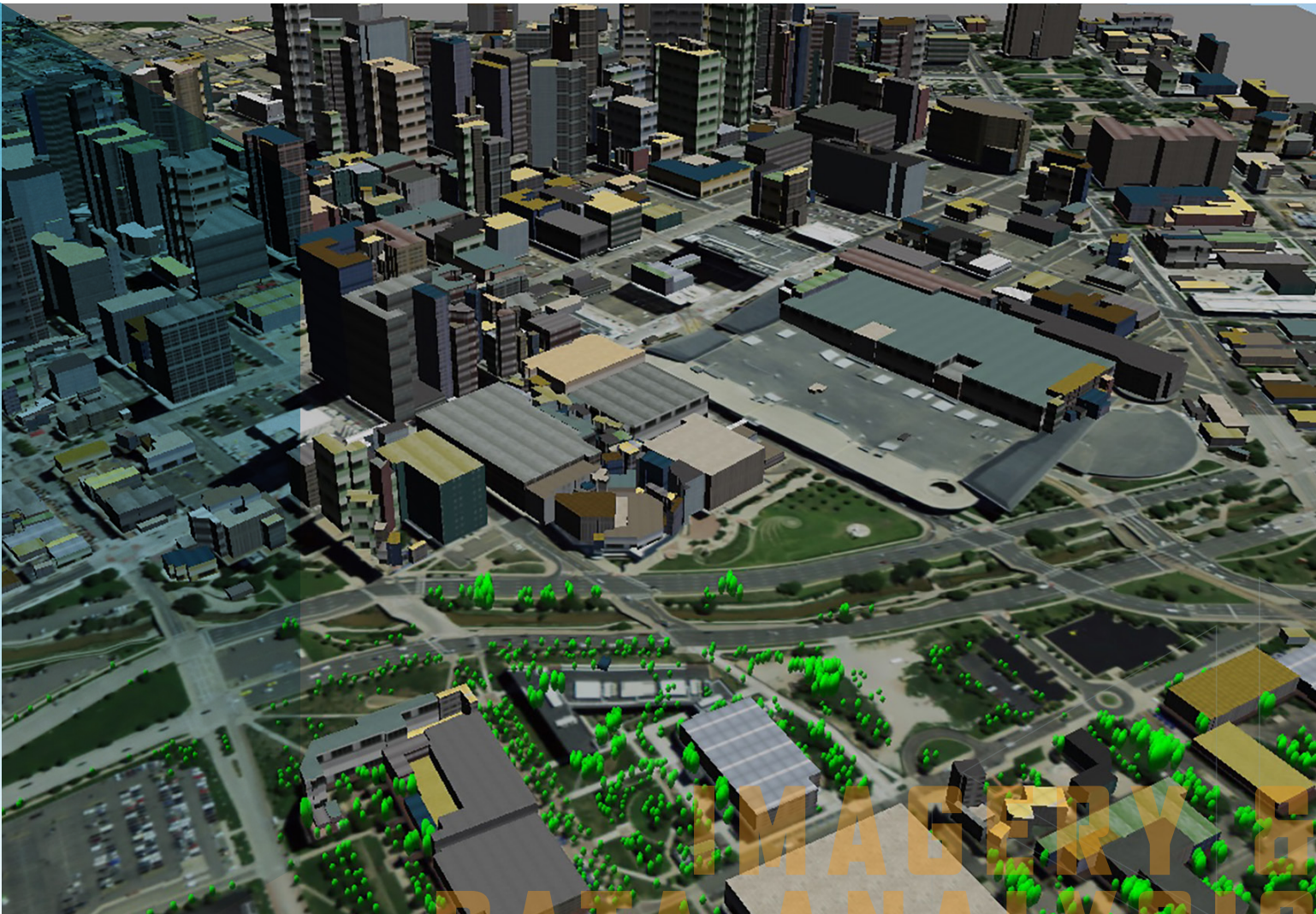


LIDAR Analyst™



EXTRACT CRITICAL CONTENT FROM LIDAR DATA

LIDAR Analyst is the ideal feature extraction software for airborne LiDAR data. Analysts can automatically extract 3D objects such as bare earth, trees or buildings. The power, speed, accuracy and broad selection of tools enable users to visualize their world for critical decision making.

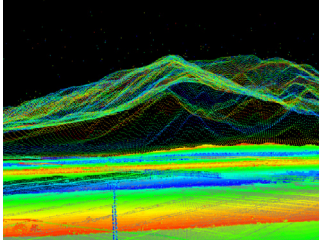
TextronSystems.com



TEXTRON Systems

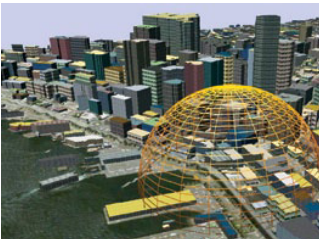
► PUSHING PAST POSSIBLE

LIDAR Analyst™



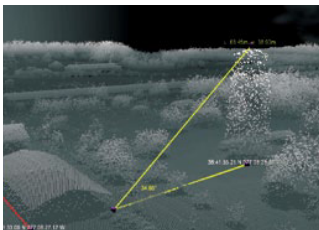
VISUALIZE

- > Examine data through 2D and 3D visualization capabilities
- > Generate 2D hill-shades, contour lines and slope images
- > Manipulate, filter and edit LiDAR point clouds in the 3D viewer



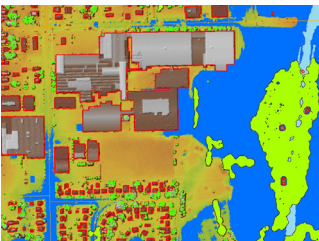
EXTRACT

- > Extract bare earth, buildings, trees and forests quickly and easily
- > Use advanced algorithms to rapidly inventory objects
- > Strip away layers to reveal the detailed ground level terrain



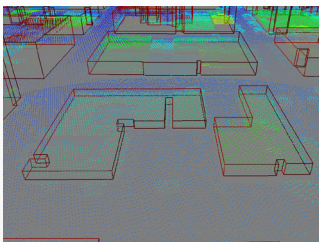
EXPLOIT

- > Conduct terrain analysis, view-shed analysis and 3D measurements
- > Review extracted results in the 3D viewer to understand context
- > Evaluate object area, dimensions, orientation and other attributes



AUTOMATE

- > Save workflows for automated replication
- > Set-up batch processing for data files to run overnight
- > Break data into viable pieces to spread across workstations



INTEGRATE

- > Integrates with Esri® ArcGIS® for easy implementation
- > Use Feature Analyst™ for increased functionality
- > Synchronize views between Lidar Analyst 3D viewer and the ArcMap 2D viewer