

# COMMANDO<sup>®</sup>

## FAMILY OF VEHICLES



[TextronSystems.com](http://TextronSystems.com)



**TEXTRON** Systems

► PUSHING PAST POSSIBLE



# WORLDWIDE SUPPORT

## LEGACY OF COMMANDO VEHICLES



**V-100**  
1963



**V-200**  
1968



**V-150**  
1971



**SCOUT**  
1976



**V-300**  
1978



**STINGRAY**  
1989



**ASV**  
1999



**ARMORED  
KNIGHT**  
2006



**TAPV**  
2012



**COMMANDO FAMILY  
OF VEHICLES**  
2015



**MSFV**  
2015

With decades of experience keeping assets operational and personnel expertly trained, we provide total life-cycle support for the COMMANDO family of vehicles and other product lines. Our mission is to design and deliver vehicles for a long life in austere battlefield and environmental conditions.



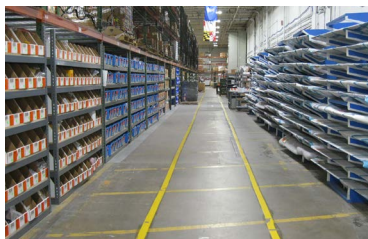
### TRAINING

Targeted training curriculum and courses are developed based on individual customer needs to get you driving and to keep your vehicle on the road. We offer hands-on maintenance and operator training, computer-based courses and realistic training aids.



### FIELD SERVICE SUPPORT

We offer a complete line of field services including repairs, modifications, upgrades, and Service Life Extension Programs (SLEPs). Our Field Service Representatives (FSRs) are actively deployed worldwide and readily available to support your most crucial missions.



### LOGISTICS

Spare parts and logistics products are readily available for the Commando FOV. Using highly reliable parts and components in the basic design will keep valuable assets in service and available for a long useful life, maximizing the value of investment.

# A COMMANDO FOR EVERY MISSION



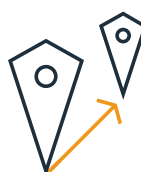
ARMORED PERSONNEL  
CARRIER (APC)



BORDER GUARD



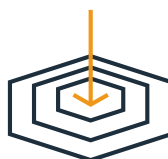
INFANTRY FIGHTING  
VEHICLE (IFV)



URBAN AND CROSS  
COUNTRY PATROL



INTELLIGENCE,  
SURVEILLANCE,  
RECONNAISSANCE (ISR)



INDIRECT FIRE/  
ARTILLERY SPOTTING



MORTAR/INDIRECT FIRE



COMMAND AND  
CONTROL



ANTI-ARMOR



ELECTRONIC WARFARE (EW)



# COMMANDO ELITE

The COMMANDO Elite 4x4 armored vehicle features the ultimate combat package of survivability, mobility, lethality, sustainability and technology. The modern design protects troops in a comfortable interior during engagements from small arms to roadside IEDs while providing the hooks and capabilities for customer mission equipment. These vehicles come equipped with our latest drive train enhancements making them fast and highly maneuverable in a wide range of environments. With a digital back bone, the COMMANDO Elite has the hooks for future upgrades and other Mission Equipment Packages (MEPs).



# VEHICLE SPECIFICATIONS

## DIMENSIONS



**MAX GROSS VEHICLE WEIGHT**  
18,460 kg (40,700 lb)



**CURB WEIGHT**  
16,465 kg (36,300 lb)

## PERFORMANCE



**SPEED (LEVEL HARD SURFACE)**  
105 kph (65 mph)



**VERTICAL WALL**  
61 cm (24 in)



**RANGE**  
644 km (@ 80 kph)  
(400 miles @ 50 mph)



**FORDING**  
152 cm (60 in)



**GRADIENT**  
60%



**MAX TURNING DIAMETER**  
19.5 m (64 ft)



**SIDE SLOPE**  
30%

## POWER TRAIN



**ENGINE**  
Cummins QSL 365,  
365 HP, 1,113 lb-ft



**TRANSMISSION**  
6-speed, Allison 3200SP



**ELECTRICAL OPTIONS**  
400 or 575 Amp Alternator

## SEATING



**MAX SEATING**  
2 crew, 4 personnel

# VEHICLE SPECIFICATIONS

## DIMENSIONS



**MAX GROSS VEHICLE WEIGHT**  
18,100 kg (39,915 lb)



**WIDTH**  
2.7 m (8 ft)



**CURB WEIGHT**  
15,600 kg (34,392 lb)



**HEIGHT**  
3 m (10 ft)



**MAX LENGTH**  
6.7 m (22 ft)



**GROUND CLEARANCE**  
66 cm (26 in)

## PERFORMANCE



**SPEED (LEVEL HARD SURFACE)**  
100 kph (62 mph)



**VERTICAL WALL**  
56 cm (22 in)



**RANGE**  
644 km @ 64 kph  
(400 miles @ 40 mph)



**FORDING**  
152 cm (60 in)



**GRADIENT**  
60%



**MAX TURNING DIAMETER**  
19.8 m (65 ft)



**SIDE SLOPE**  
30%

## POWER TRAIN



**ENGINE**  
Cummins QSL 365



**TRANSMISSION**  
6-speed, Allison 3500SP



**ELECTRICAL OPTIONS**  
260 or 400 Amp Alternator

## SEATING



**MAX SEATING**  
3 crew, 7 personnel





# COMMANDO SELECT

Exceptional crew protection is built into all COMMANDO Select vehicles. Greater survivability, however, doesn't mean sacrificing vehicle mobility – these vehicles deliver greater mobility than similar armored vehicles on the market. COMMANDO Select vehicles are customizable giving operators the ability to go almost anywhere and perform nearly any mission. Whether serving as a combat-proven infantry fighting vehicle (IFV), performing reconnaissance or as a command and control vehicle the COMMANDO SELECT is ready for action. With a wide range of configurations, it is also a proven ambulance, armored personnel carrier (APC) and a support utility vehicle.





# COMMANDO VANGUARD

Leveraging our years of experience in armored vehicle design and manufacturing, the COMMANDO Vanguard is the newest addition to our COMMANDO Family of Vehicles. The COMMANDO Vanguard offers a low-cost, advanced solution for a variety of missions including border patrol, transporting personnel or intelligence, surveillance and reconnaissance (ISR). It provides the expected mobility and inherent reliability of a COMMANDO with the flexibility of affordable customization. Manufactured in the United States and backed by our hands-on aftermarket support services, the 4x4 COMMANDO Vanguard is a useful ally in achieving mission success.





# VEHICLE SPECIFICATIONS

## DIMENSIONS



**MAX LENGTH**  
6.7 m (22 ft)



**WIDTH**  
2.7 m (8 ft)



**GROUND CLEARANCE**  
66 cm (26 in)



**MAX GROSS VEHICLE WEIGHT**  
14,288 kg (31,500 lb)

## PERFORMANCE



**SPEED (LEVEL HARD SURFACE)**  
100 kph (62 mph)



**VERTICAL WALL**  
56 cm (22 in)



**RANGE**  
644 km @ 64 kph  
(400 miles @ 40 mph)



**FORDING**  
152 cm (60 in)



**GRADIENT**  
60%



**MAX TURNING DIAMETER**  
19.8 m (65 ft)



**SIDE SLOPE**  
30%

## POWER TRAIN



**ENGINE**  
Cummins QSL 365



**TRANSMISSION**  
6-speed, Allison 3500SP

## SEATING



**MAX SEATING**  
3 crew, 7 personnel

# WEAPONS STATIONS

---



25 mm



40 mm/ .50 CALIBER TURRET



OGPK





# ADDITIONAL OPTIONS

---



**RADIO &  
INTERCOM  
SYSTEM**



**DIGITAL  
BACKBONE**



**INTEGRATED  
UAS SYSTEM**



**MODULAR  
ARMOR KITS**



**SMOKE GRENADE  
LAUNCHERS**



**ANTI-IED KITS**



**GPS**



**NBC  
(OVERPRESSURE  
SYSTEM)**



**INTEGRATED  
AEROSTAT SYSTEM**



**RPG NETTING**



**ANTI-ARMOR  
MISSILE SYSTEM**





**TEXTRON** Systems

© 2015, 2019-2020 Textron Systems Corporation. COMMANDO is a trademark or a registered trademark in the US, Philippines and other countries.