

REMOTEVIEW™ PRO



ENHANCED IMAGERY ANALYSIS

TEXTRON Systems

► PUSHING PAST POSSIBLE

REMOTEVIEW™ PRO

Enhanced Imagery Analysis

RemoteView software is a complete GEOINT workstation for imagery intelligence professionals that is known for its overall high accuracy, mensuration tools, ability to work with big data, seamless pan/roaming, enhanced display capabilities and a plethora of multi-spectral analytical tools. Optional extensions expand the power of RemoteView, enabling customization to meet unique and specific user requirements.

Textron Systems' flagship imagery exploitation product suite empowers the GEOINT professional with robust, front-end data management and discovery capabilities and high accuracy PED tools for extracting, depicting, monitoring, and correlating critical information/phenomena/events from imagery.

- > Transform imagery, elevation, video, and geospatial data into intelligence products
- > Monitor dynamic events with multi-image analysis tools
- > Reveal critical information using multispectral analysis
- > Correlate features and events with high precision mensuration
- > Simulate real-world conditions with 3D and terrain analysis
- > Disseminate and share information with product generation suite
- > Customize and expand capabilities with modular extensions and 3rd party integration with API

ENHANCED IMAGERY ANALYSIS

RemoteView has a long history of success across a broad range of users within the U.S. Intelligence Community and across analysis directorates in 27 countries. From imagery acquisition to exploitation to mission planning and execution, Textron Systems provides a suite of tools to greatly enhance the intelligence capabilities of imagery analysts and improve situational awareness for decision makers.

KEY FEATURES

- > Advanced image analysis tools
- > Multi-image tools
- > Multispectral analysis
- > High precision mensuration
- > Modular extensions
- > Precise terrain analysis
- > Product generation
- > Video & motion analysis
- > 3rd party integration with API
- > Osd integration
- > Robust data management

IMAGE ANALYSIS

RemoteView enables users to perform image analysis tasks with ease.

Open, view, zoom, rotate, roam and pan imagery with ease. Alter an image's brightness, contrast, haze, sharpness and dynamic range to maximize what can be seen. Use a raw image's inherent camera data to determine length, bearing, perimeter, area and height. Calibrate images to make them more accurate and/or more aligned with other images.

KEY FEATURES

- > **Mensuration**
calculate measurements using georeferencing and other data included with the image
- > **Annotation**
advanced toolset for plotting graphics, marking, counting, and measuring features
- > **Calibration**
calibration tools for loading data, plotting points, and calibrating images

RVCORE™

RVCore is a set of containerized services that deliver mission-proven capabilities that are currently being delivered through RemoteView™. The RVCore service engine delivers geospatial data processing and analysis services that leverage Textron Systems' 25-year legacy of supporting complex data types and missions.

KEY FEATURES

- > Still/Motion image tile service and statistics, metadata extraction and redaction, and image chipping
- > Reduced Resolution Data Set (RRDS) generation
- > Mosaic generation
- > Pansharpening
- > Image rectification/orthorectification



MULTI-IMAGE ANALYSIS

Advanced Stack, Comparison, and Mosaic Capabilities

RemoteView™ offers a suite of Multi-Image Analysis tools for creating different views of your data. These tools are ideal for identifying changes to a location of interest over time, reviewing and analyzing multiple related images, or creating different views for a single image. Create layouts to show multiple images side-by-side, stacked or as a mosaic.



KEY FEATURES

- > **MultiView:** View up to 20 images in grid layout with related, unrelated, or the same image with different viewpoints
- > **ImageStack:** View stacked images manually or using Auto Review to observe changes over time or create multiple perspectives
- > **Mosaic:** Rapidly visualize multiple images as a contiguous dataset, virtually or as a processed composite
- > **Multi-Band Analysis Display (MAD):** View several band-to-color mapping configurations simultaneously

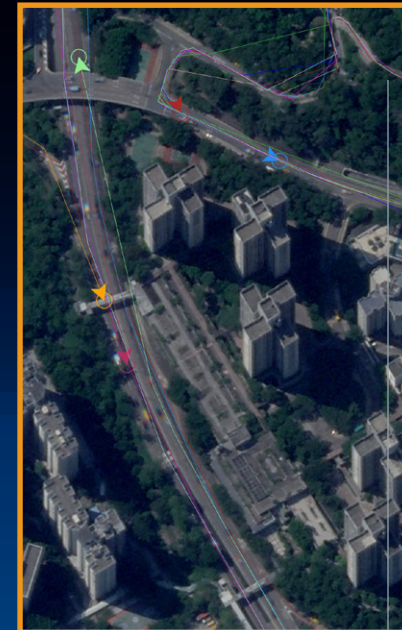
Image: Copyright 2023 Planet Labs PBC - All Rights Reserved

MOTION ANALYSIS

RemoteView has several easy-to-use tools for loading, reviewing, and analyzing motion imagery (MIE4NITF), and full motion video (FMV) formats. Data is loaded in the RemoteView folder letting you organize and leverage these data types all within RemoteView, without having to install and manage a separate video application.

KEY FEATURES

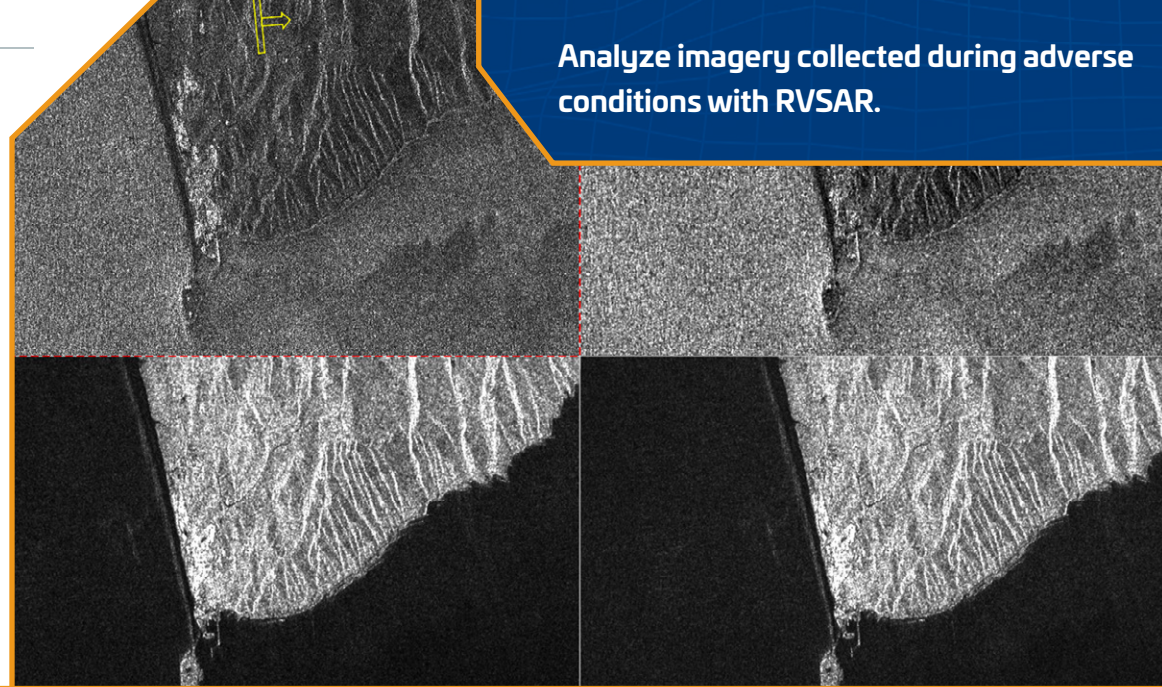
- > Geo and up angle lock
- > Speed mensuration
- > 4676 data display/manipulation
- > Clip generation
- > Full integration with RV geospatial tools



SAR TOOLS

Analyze imagery collected during adverse conditions with RVSAR. RVSAR enables RemoteView™ to load and analyze commercial SAR data. RVSAR provides the capability to further exploit SAR imagery through advanced functions such as generating polarization compositions and Amplitude and Coherence Change Detections.

- > Save time with quick look and one-time* RRDS generation
- > Convenient single page view of multiple SAR images
- > Enhanced algorithms designed for SAR imagery
- > Heads-Up Display (HUD) overview



Analyze imagery collected during adverse conditions with RVSAR.

MULTISPECTRAL TOOLS



RemoteView provides a suite of tools to view and classify multispectral images, including the unsupervised and supervised classification wizard, an image calculator, and a pan sharpening tool. You can also switch between band combinations to quickly get different views of your imagery with the new Bands and Band Profiles toolbars. Create detailed multi band compositions, pan sharpen, and perform image classification to reveal, describe and monitor key assets, events, and details in imagery.

KEY FEATURES

- > Image calculator
- > Pan sharpening
- > Band manipulation
- > Image classification
- > Multi-band analysis display
- > Super cube

RemoteView greatly enhances remote sensing and decision-making capabilities. The user-friendly interface and robust features streamline analysis processes, allowing users to extract valuable insights from geospatial data with precision and efficiency.



3D TOOLS

Visualize real-world conditions for improved analysis and mission planning. Detailed 3D visualization of terrain and terrain features is crucial in today's world for enhanced situational awareness and allows for stakeholders to gain a more realistic understanding of the operational environment from multiple viewpoints.

3D Pro™ offers advanced analytical capabilities that allow for development of immersive content to supplement mission planning and CONOPS.

KEY FEATURES

- > Helicopter landing zone (HLZ) analysis
- > Damage assessment
- > LOS projections
- > Flight/driving paths
- > Scenario simulations

RV Cloud is a game-changer for geospatial intelligence needs. Its seamless integration with cloud solutions elevates the user's capabilities, providing unparalleled access and collaboration on critical data.

CLOUD SOLUTIONS

RV offers imagery exploitation capabilities through the cloud Offering Web-based ELT® software and thin-client variants in our trusted line of geospatial analytic software. Designed with our substantial industry experience and developed using an agile model, Textron Cloud Solutions accelerate delivery of our proven image exploitation capabilities through the cloud.

KEY FEATURES

- > **RV Cloud**
Core imagery exploitation capabilities resident in RemoteView™ in a standard web browser
- > **SeeGEO®**
Real-time visualization, collaboration and exploitation Tool
- > **Web Interface**
- > **Secure Cloud/Internal Server**



TRAINING

Discover the dynamic opportunities of our Geospatial Analysis Software

Get ready to unleash the power of Textron Systems' geospatial software tools. Using a flexible training approach, our team of experts can tailor lessons to replicate the student's real world missions. This customizable approach ensures that your analysts can incorporate the full functionality of our geospatial software into their own daily workflows. Our training is especially valuable for professionals in remote sensing, geospatial intelligence (GEOINT) and Imagery Analysis (IA) environments.

Choose from on site or virtual training courses skillfully designed to implement interactive, hands on training for all levels. Our team will incorporate your data sets to simulate your most important daily objectives and you will have the freedom to decide which lessons are included, optimizing each training session.

CUSTOMER INFO

- > Defense and intelligence
- > Border Security
- > Academic/Research
- > Systems integration
- > State, Local, Government
- > Commercial photogrammetry mapping, surveying
- > Transportation
- > Natural resource management
- > Imagery science
- > Non-profit
- > International MOD

ABOUT TEXTRON SYSTEMS

Textron Systems is a world leader in uncrewed air, surface and land products, services and support founded on the combined expertise in our family of brands that includes Textron Systems, Howe & Howe, Lycoming, and ATAC. We harness the unlimited power of teamwork to solve incredible problems across seven specialized domains: air, land, sea, propulsion, weapon systems, electronic systems and test, training & simulation. From product development and manufacturing to training, operations, and support, we integrate and offer ingenious and advanced solutions to support defense, aerospace, and other customer missions.

Textron Systems | Sterling, VA | +1.800.655.2616 | geosales@textronsystems.com

[TextronSystems.com](https://www.textronsystems.com)



TEXTRON Systems

► PUSHING PAST POSSIBLE