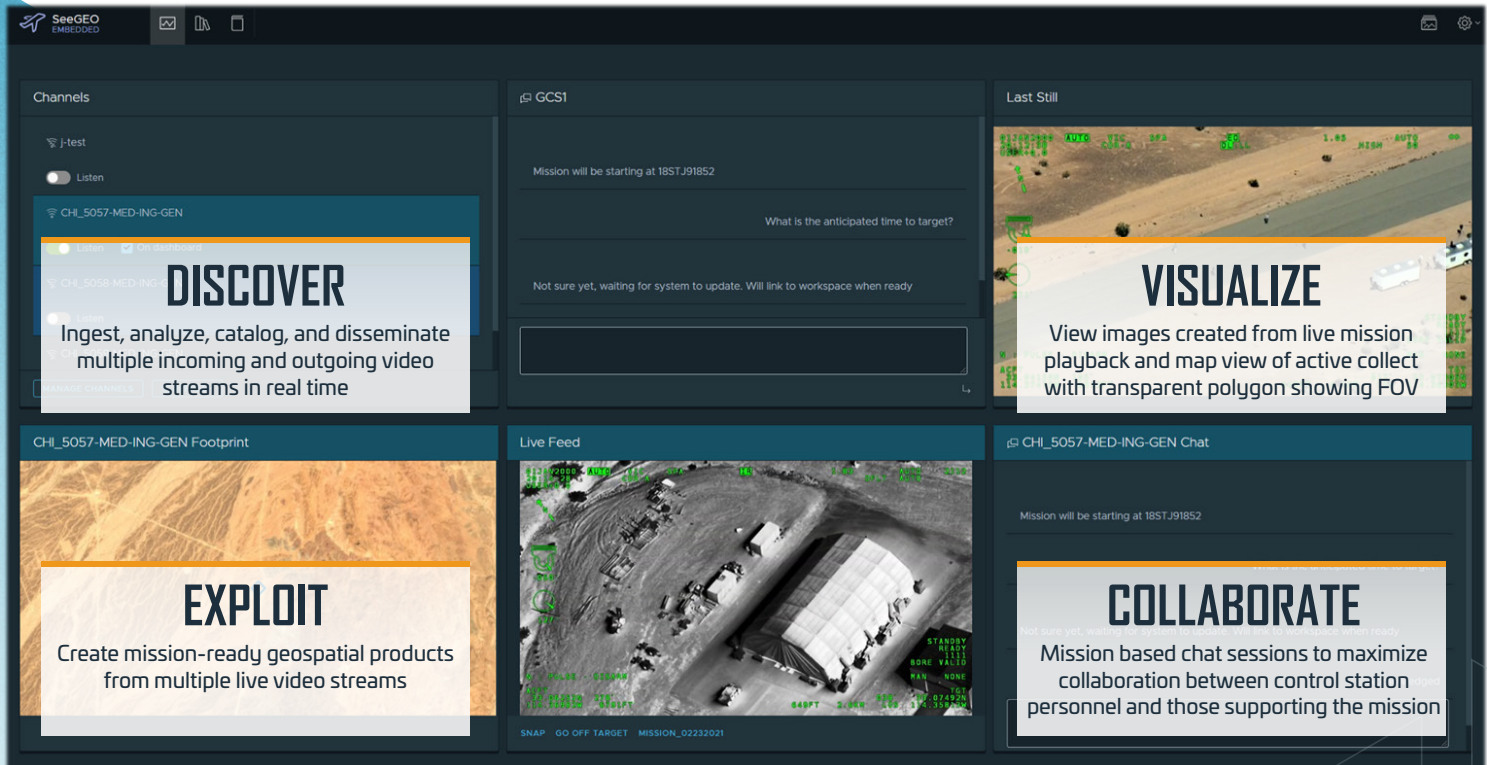


SeeGEO[®] SOFTWARE

FULL MOTION VIDEO EXPLOITATION FOR MISSION SUCCESS



DISCOVER > VISUALIZE > EXPLOIT > COLLABORATE

Textron Systems' SeeGEO[®] is a web-enabled platform with an architecture purpose built to solve problems across the spatial-temporal spectrum. Providing support for multi-modal data the SeeGEO software delivers a sophisticated toolset for exploitation packaged in a highly collaborative environment. With its user first design approach SeeGEO provides an experience that is unmatched in the industry that is coupled with best in class tools for visualizing and interacting with geospatial imagery and video.

The SeeEO product delivers a tactical edge in **mission-centric** situations by enabling Full Motion Video (FMV) analysts to visualize & interact with MISB-compliant data and create success-critical collateral that can be easily exploited live in real time or referenced later for analysis.

- > Scalable to meet needs from the tactical edge to the enterprise level
- > Single user experience for ingesting and cataloging imagery, video and data
- > User-generated cloud work spaces with live editing, commenting and chat
- > Improved visualization and interaction in real-time for increased situational awareness



[TextronSystems.com](https://www.textron.com)

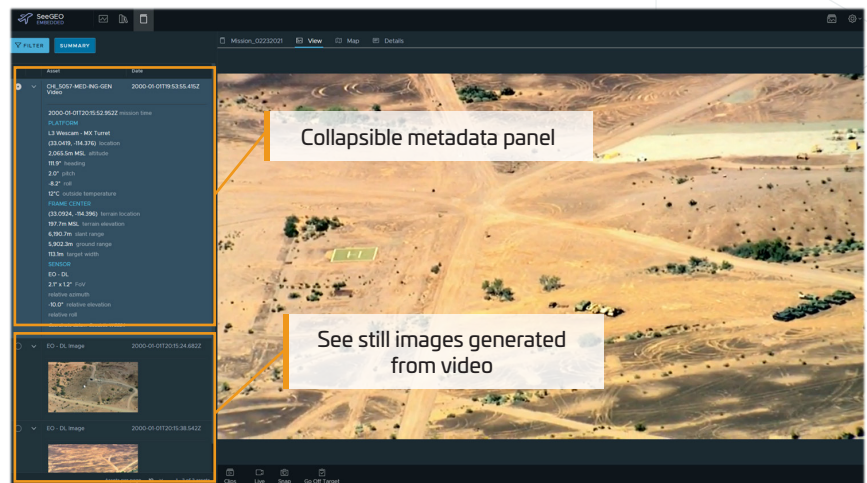


TEXTRON Systems

► PUSHING PAST POSSIBLE

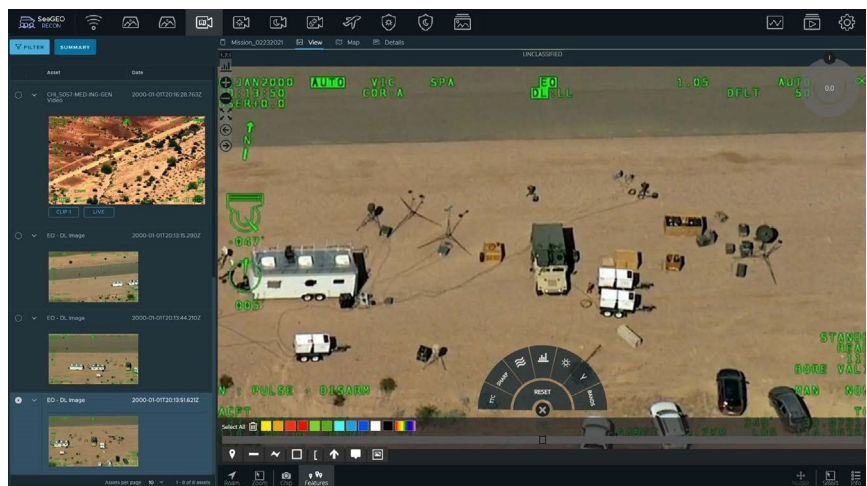
SeeGEO[®] EMBEDDED

- > Re-stream & transcode active feeds to integrated products
- > Archive mission-specific chat, video, and imagery for analysis
- > Draw search regions on the map and immediately see filtered data
- > Generate geo-referenced still from streamed videos
- > Enhance, Measure, & Annotate images and share them with Textron Systems' RemoteView[™]



SeeGEO RECON

- > Maintain situational awareness with consistent view of live video
- > Supports 20+ live feeds simultaneously
- > Capable of precise geolocation
- > Tailored to mission profiles
- > Integrate multiple livestreams into a single Common Operating Picture (COP) via web IP config



KEY FEATURES

- > **Discovery:** Ingest, Process, Store, and Search Imagery, Video and Missions (e.g., user generated content, chat and derived products).
- > **Collaboration:** Add context and critical value throughout the workflow. Missions are used to organize data, work products, and activity with other analysts.
- > **Visualization:** Lightweight and web-based tools for real-time interaction and consumption of multi-modal data.
- > **Exploitation:** Data support coupled with the exploitation toolset allows users to chip, mensurate, and annotate imagery and videos.
- > **Dissemination:** Restream video at varying qualities while creating accurate and timely intelligence products for improved decision making.

SeeGEO supports flexible licensing models and pricing that can scale from tactical to enterprise deployments.