

COMMANDO[®]

FAMILY OF VEHICLES



WORLDWIDE SUPPORT

LEGACY OF COMMANDO VEHICLES



V-100
1963



V-200
1968



V-150
1971



SCOUT
1976



V-300
1978



STINGRAY
1989



ASV
1999



**ARMORED
KNIGHT**
2006



TAPV
2012



**COMMANDO FAMILY
OF VEHICLES**
2015



MSFV
2015

With decades of experience keeping assets operational and personnel expertly trained, we provide total life-cycle support for the COMMANDO family of vehicles and other product lines. Our mission is to design and deliver vehicles for a long life in austere battlefield and environmental conditions.



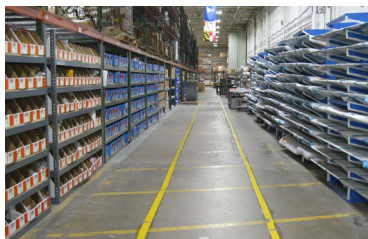
TRAINING

Targeted training curriculum and courses are developed based on individual customer needs to get you driving and to keep your vehicle on the road. We offer hands-on maintenance and operator training, computer-based courses and realistic training aids.



FIELD SERVICE SUPPORT

We offer a complete line of field services including repairs, modifications, upgrades, and Service Life Extension Programs (SLEPs). Our Field Service Representatives (FSRs) are actively deployed worldwide and readily available to support your most crucial missions.



LOGISTICS

Spare parts and logistics products are readily available for the Commando FOV. Using highly reliable parts and components in the basic design will keep valuable assets in service and available for a long useful life, maximizing the value of investment.

A COMMANDO FOR EVERY MISSION



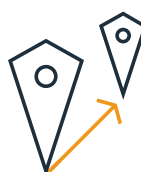
ARMORED PERSONNEL
CARRIER (APC)



BORDER GUARD



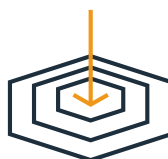
INFANTRY FIGHTING
VEHICLE (IFV)



URBAN AND CROSS
COUNTRY PATROL



INTELLIGENCE,
SURVEILLANCE,
RECONNAISSANCE (ISR)



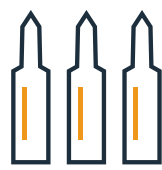
INDIRECT FIRE/
ARTILLERY SPOTTING



MORTAR/INDIRECT FIRE



COMMAND AND
CONTROL



ANTI-ARMOR



ELECTRONIC WARFARE (EW)

VEHICLE SPECIFICATIONS

DIMENSIONS



MAX GROSS VEHICLE WEIGHT
18,100 kg (39,915 lb)



WIDTH
2.7 m (8 ft)



CURB WEIGHT
15,600 kg (34,392 lb)



HEIGHT
3 m (10 ft)



MAX LENGTH
6.7 m (22 ft)



GROUND CLEARANCE
66 cm (26 in)

PERFORMANCE



SPEED (LEVEL HARD SURFACE)
100 kph (62 mph)



VERTICAL WALL
56 cm (22 in)



RANGE
644 km @ 64 kph
(400 miles @ 40 mph)



FORDING
152 cm (60 in)



GRADIENT
60%



MAX TURNING DIAMETER
19.8 m (65 ft)



SIDE SLOPE
30%

POWER TRAIN



ENGINE
Cummins QSL 365



TRANSMISSION
6-speed, Allison 3500SP



ELECTRICAL OPTIONS
260 or 400 Amp Alternator

SEATING



MAX SEATING
3 crew, 7 personnel



COMMANDO SELECT

Exceptional crew protection is built into all COMMANDO Select vehicles. Greater survivability, however, doesn't mean sacrificing vehicle mobility – these vehicles deliver greater mobility than similar armored vehicles on the market. COMMANDO Select vehicles are customizable giving operators the ability to go almost anywhere and perform nearly any mission. Whether serving as a combat-proven infantry fighting vehicle (IFV), performing reconnaissance or as a command and control vehicle the COMMANDO SELECT is ready for action. With a wide range of configurations, it is also a proven ambulance, armored personnel carrier (APC) and a support utility vehicle.



COMMANDO VANGUARD

Leveraging our years of experience in armored vehicle design and manufacturing, the COMMANDO Vanguard is the newest addition to our COMMANDO Family of Vehicles. The COMMANDO Vanguard offers a low-cost, advanced solution for a variety of missions including border patrol, transporting personnel or intelligence, surveillance and reconnaissance (ISR). It provides the expected mobility and inherent reliability of a COMMANDO with the flexibility of affordable customization. Manufactured in the United States and backed by our hands-on aftermarket support services, the 4x4 COMMANDO Vanguard is a useful ally in achieving mission success.



VEHICLE SPECIFICATIONS

DIMENSIONS



MAX LENGTH
6.7 m (22 ft)



WIDTH
2.7 m (8 ft)



GROUND CLEARANCE
66 cm (26 in)



MAX GROSS VEHICLE WEIGHT
14,288 kg (31,500 lb)

PERFORMANCE



SPEED (LEVEL HARD SURFACE)
100 kph (62 mph)



VERTICAL WALL
56 cm (22 in)



RANGE
644 km @ 64 kph
(400 miles @ 40 mph)



FORDING
152 cm (60 in)



GRADIENT
60%



MAX TURNING DIAMETER
19.8 m (65 ft)



SIDE SLOPE
30%

POWER TRAIN



ENGINE
Cummins QSL 365



TRANSMISSION
6-speed, Allison 3500SP

SEATING



MAX SEATING
3 crew, 7 personnel



WEAPONS STATIONS



25 mm



40 mm/ .50 CALIBER TURRET

*AVAILABLE FOR COMMANDO SELECT ONLY



OGPK



ADDITIONAL OPTIONS



**RADIO &
INTERCOM
SYSTEM**



**DIGITAL
BACKBONE**



**INTEGRATED
UAS SYSTEM**



**MODULAR
ARMOR KITS**



**SMOKE GRENADE
LAUNCHERS**



ANTI-IED KITS



GPS



**NBC
(OVERPRESSURE
SYSTEM)**



**INTEGRATED
AEROSTAT SYSTEM**



RPG NETTING



**ANTI-ARMOR
MISSILE SYSTEM**



TEXTRON Systems

© 2022 Textron Systems Corporation. COMMANDO is a trademark or a registered trademark in the US, Philippines and other countries.